

Collapsible Plastic Box

Efobox

Sample Drawing



| External dimension (mm) | | | Inside dimension (mm) | | | Folding Dimension (mm) | | | Weight (kg) | Materials | Capacity (kg) | Layers |
|---------------------------|-----|-----|-------------------------|-----|-----|--------------------------|-----|----|---------------|-----------------|-----------------|--------|
| L | W | H | A | B | C | a | b | c | | | | |
| 600 | 400 | 318 | 560 | 360 | 290 | 600 | 400 | 95 | 3.59 | New PP material | 20 | 5 |
| 600 | 400 | 265 | 560 | 360 | 240 | 600 | 400 | 95 | 3.2 | New PP material | 20 | 5 |

Applications & Characteristic



Structures are designed reasonably , sturdy and durable ; reusable with a long service life.

The whole box adopts a hinge pin design, loading capacity will reach to about 20kg per single case , can be stacked 5 layers without deformation.



Made by the new PP material,meet food grade packaging requirements, use can be safer and more reassuring.

High and low temperature resistance.



Applications & Characteristic



Buckle design, can be stacked by any ways, cross stacking at the bottom, not easily falling down while moving.

It can be printed at the border

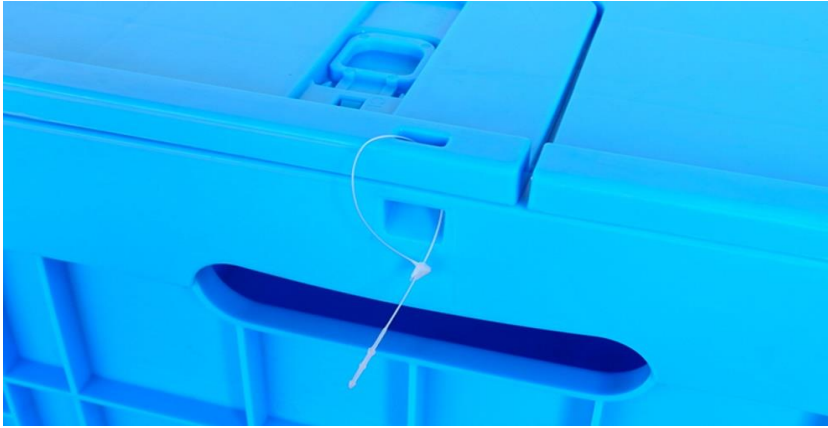


Joint reinforcement is dense, increase the load bearing.

Elastic pin shaft design, stronger than a hasp design.



Applications & Characteristic



The lid is designed with snap, It is not easy to scatter the goods when container is full.

Misplaced bottom patent design can be arbitrary crisscross stacking.

